



WELCOME BACK

Autumn 1/2

I would like to wish a warm welcome back to all our pupils, especially our new Reception Class of 2023 and our five other new starters. We also have some new staff members this year. Welcome to Miss Bennion (Y1), Miss Udy (Y3), Mrs O'Connor, Miss Gilbert, Miss Hickey and Miss Crowe who start in our SPC and Miss Rowson a new Lunch Time Ancillary.

Our diary is filling up fast with lots of exciting learning opportunities planned for our children. A link to half termly newsletters is emailed home by the 2nd Wednesday of each half term, do look out for key dates on the back of these. If, for whatever reason, you are unable to access the website link, there will always be spare hard-copies at the school office. Parents' Meeting appointments will be available for the last week of this half term to enable you to meet with your child's class teacher to see how they have settled in to their new class. A Parent Questionnaire will also be passed to you during your meeting. Do look out for email correspondence a couple of weeks beforehand giving details of when the link in your child's Arbor profile goes live, to enable you to arrange your appointment. Please ensure you are able to log on to Arbor before this date, to allow time for any troubleshooting that may be needed.

Below are some general reminders. Please remember if you ever need to speak to your child's class teacher do not hesitate to get in touch. Kind regards, Mrs Jackson.



Snacks and Drinks: The children can bring in a **healthy** snack (not sweets, chocolate or crisps) and a drink / water bottle each day. Biscuits can be bought on a Friday for 30p. Please provide a named purse/wallet to bring money in. **Due to allergies, snacks and packed lunch boxes must not contain nuts.**

P.E. / Swimming for Y3-Y6: Please ensure that your child has his/her full P.E. kit in school everyday. It will be sent home at the end of every half term to be washed and returned. If your child is swimming, a letter will have been emailed already. If you are able to help, please contact your child's class teacher. We do expect all regular volunteers to have a police check. Please make sure that **all items of clothing**, even pumps, are labelled. It is much easier to return jumpers when they are named.



Homework: We expect all children to read every night for 10 minutes at home and encourage parents to read to their children too. If your child has a school Reading Record, please sign this to show your child has read at home. We also encourage children to practice their times tables at home to compliment the learning that goes on in school. Reception is slightly different and further information will be sent to those parents.

Reading: All children should always have two reading books sent home with them, these may be individual or a Guided Reading book. Teachers are encouraged to teach reading in a personalised manner, according to the needs of the individual child. Therefore your child might not do a Guided Read each week but will be taught reading in the most suitable way.

Parking / before and after school:

Please can I remind parents NOT to park on the yellow chevrons lines outside our Specialist Provision Class, this area is needed for the parents of children in Mrs Teare's Class.

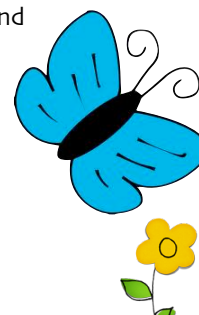


Holidays: Should you require special holiday leave for exceptional circumstances, you are asked to complete the holiday form which can be obtained from the office or on our website. Please provide details of the reason.

School Uniform: At PCW we do not expect our children to wear branded jumpers or PE T-shirts. We do request that our children wear black footwear.

School Development Priorities: The staff undertook some very exciting training around metacognition and thinking during the first INSET training days in September. We will be sharing our key school development priorities with parents this term and hope to invite Nick Chandley who delivered our staff training to deliver a session to parents, to help you understand why developing metacognition is a key part of our curriculum.

Class information sheet: You should all by now have received a class information sheet which contains more detail around the learning for your child's class this half term. There will also be key dates and other information within it, do look out for these every half term.





Start of the School day: Pupils are reminded to enter school at the start of the day via the **back playground areas**. Parents are not permitted to drop off and pick up children at the front door during the start and end of the day. The front doors are locked until 8.55am and will be opened until 9.30am for parents to visit the office if needed. The doors will then be locked. To access school when the front doors are locked, you will need to ring the doorbell and wait to be buzzed in and you will not be able to leave without assistance from a member of staff. Therefore, please allow sufficient time when picking your child(ren) up during the day for appointments etc. We ask that parents always enter school through the main entrance during school hours.

I have also received complaints regarding cars using Fuchsia Lane as an overspill car park and residents are having difficulties gaining access to their homes. Can I ask you all to be considerate to our surrounding neighbours.

Scooters / bikes / balls / Slide:

Children who ride scooters / bikes to school must not ride them in the car park or on the playground as in the past young children have nearly been knocked over. The children also know that they are not to use footballs or go on the slide prior to the start of the school day. If your child does wish to bring their own ball into school, they do so at their own risk (we often have balls get lost over the hedges). It is always a good idea to name them.

Milk / Dinner: Please ensure payment of £79.20 for this half term's dinners is paid no later than FRIDAY 16 September. Cheques are to be made payable to the Isle of Man Government. Please also put your child's name on the back of the cheque. Menus can be obtained from the Office.

Letters regarding milk will be going out this week. Milk will commence WB 25 Sept. We request that you continue to pay for milk via the office and not using ParentPay.

Topics:

Mrs Teare's Class: A World of Imagination

Reception: Marvellous Me

Y1: Wodland Wonders

Y2: Swords and Shields

Y3: Truly Scrumptious

Y4: Extreme Earth

Y5: Mythical Beasts

Y6: To Victory

Lost property -

This is in the corridor to the left hand side of the Main Office.

Medicines / head bumps: It is the responsibility of parents to ensure that if their child needs to have medication in school, it is received, labelled and kept in date. If a Care Plan is required, please contact the School Office and Mrs Quayle will be in touch to organise. If you require school to administer any medicine, parents **MUST** complete the appropriate form at the school office.

If your child receives a bump to the head in school and it is not deemed serious they will be given a red bumped head letter to take home so please check your child's school bags daily. We do, of course, telephone parents should it be necessary, so please ensure Emergency Contacts are kept up to date and we ask parents to answer their phones should we call you.

School Houses: Going forward we will now be using our new school house names:

Christian - Blue

Dawson - Green

Morrison - Yellow

Shimmin - Red

School Holiday Dates:

Below is the link for future School Holiday dates.

<https://www.gov.im/media/750665/school-holidays-printable-version-070922.pdf>





DATE:	EVENT:
Every Tuesday in our Main Hall.	Singing Jo: 2.15 - 3.15pm.
Friday 15 September.	Class information sheets home by today (containing general information / learning and topic details).
WB 20 September.	Isle Listen Sessions being delivered from this week for KS2 only. Key themes include: Emotional Literacy, Self-Esteem, Positive Relationships.
WB Monday 25 September.	Y6 Group 1 at the Venture Centre.
WB Monday 2 October.	Y6 Group 2 at the Venture Centre.
Wednesday 11 & Thursday 12 October 9am-10am.	Reception Stay and Learn sessions for parents. Details to follow.
Monday 16th - Friday 20th October	Parent's Evening Week
Tuesday 17 October - Thursday 19 October.	Steve Woodley in to take individual pupil photographs (see separate letter being sent home this week - signature / permission required). Manx Litfest Week.
Friday 20 October.	BREAK UP FOR HALF TERM.
Monday 30 October.	SCHOOL REOPENS.
Tuesday 31 October.	Hop tu Naa celebrations - details to follow.
Friday 3 November.	Flu Vaccinations (for those children with consent).
Thursday 16 November.	Y6 Junior Achievement.
Thursday 23 November.	Y6 Junior Achievement.
WB Monday 27 November.	Police Treat.
Friday 1 December.	Christmas Fair 6-8pm.

Dates and times for Christmas Concerts to follow.

